

# Common diseases of peas

## Bacterial diseases

**Pea bacterial blight**  
*Pseudomonas syringae* pv. *pisii*



## Fungal diseases/Oomycete diseases

**Damping off**  
Soil-borne fungi  
*Pythium* spp.



**Foot rot**  
*F. solani*, *D. pinodella*



**Foot rot**  
*A. euteiches*

## Viruses

**Pea Early Browning Virus**  
PEBV



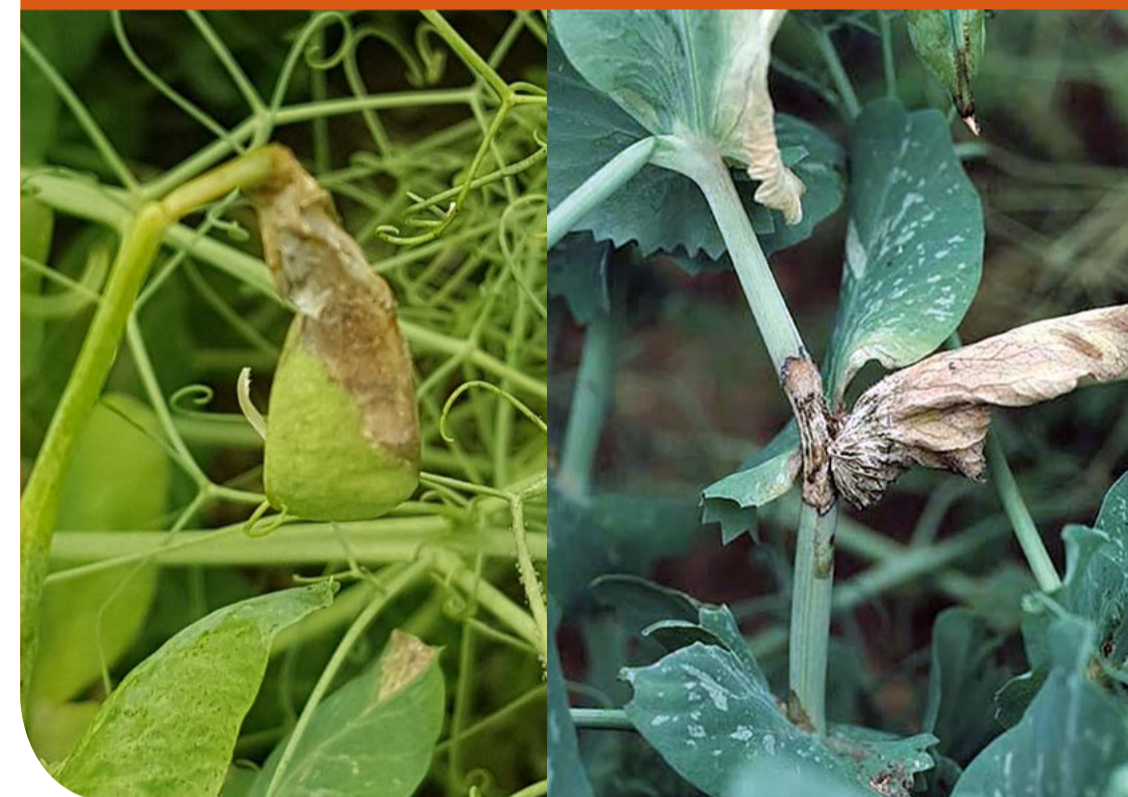
**Pea Enation Mosaic Virus**  
PEMV



**Ascochyta leaf and pod spot**  
*A. pisi*, *M. pinodes*, *D. pinodella*



**Botrytis (grey mould)**  
*Botrytis cinerea*



**Pea wilt**  
*Fusarium oxysporum* f. sp. *pisii*



**Pea Seed-borne Mosaic Virus**  
PSbMV



**Pea Streak Virus**  
PeSV



**Powdery mildew**  
*Erysiphe pisi*



**Sclerotinia (white mould)**  
*Sclerotinia sclerotiorum*



**Downy mildew**  
*Peronospora viciae*



Check out AHDB's Pea and Bean Crop Walkers' Guide for full descriptions of all the common diseases of peas.

To access more information, you can download AHDB Crop Walkers' Guides and Nutrient Management Guides (RB209) from the Apple Store and Google Play Store.



All images are courtesy and copyright of PGRO. Diagnosis of viral diseases from symptoms is problematic and should always be confirmed by laboratory investigation.

While the Agriculture and Horticulture Development Board seeks to ensure that the information contained within this document is accurate at the time of printing, no warranty is given in respect thereof and, to the maximum extent permitted by law, the Agriculture and Horticulture Development Board accepts no liability for loss, damage or injury howsoever caused (including that caused by negligence) or suffered directly or indirectly in relation to information and opinions contained in or omitted from this document. Reference herein to trade names and proprietary products without stating that they are protected does not imply that they may be regarded as unprotected and thus free for general use. No endorsement of named products is intended, nor is any criticism implied of other alternative but unnamed products.

© Agriculture and Horticulture Development Board 2018. All rights reserved.

Produced for you by:

AHDB Horticulture, Stoneleigh Park,  
Kenilworth, Warwickshire, CV8 2TL

If you no longer wish to receive this information,  
please email us on [comms@ahdb.org.uk](mailto:comms@ahdb.org.uk)

T 024 7669 2051  
E [comms@ahdb.org.uk](mailto:comms@ahdb.org.uk)  
W [horticulture.ahdb.org.uk](http://horticulture.ahdb.org.uk)  
T @AHDB\_Hort

